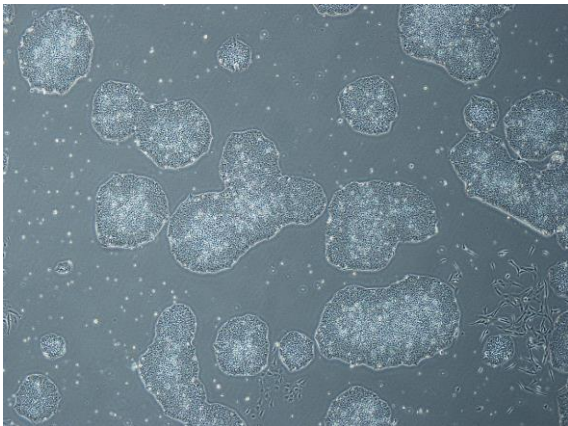
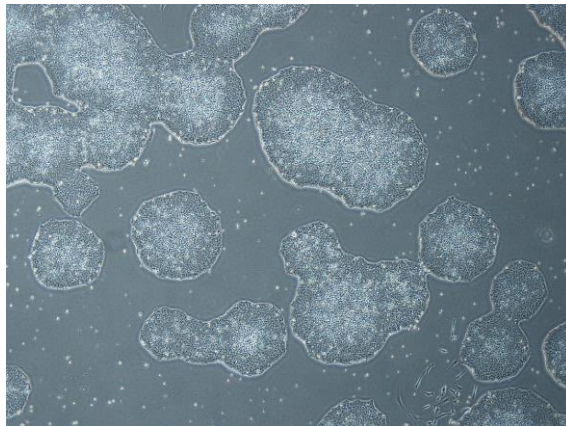


## 【 CiRA-j-1418 】 Morphology of iPSC colonies

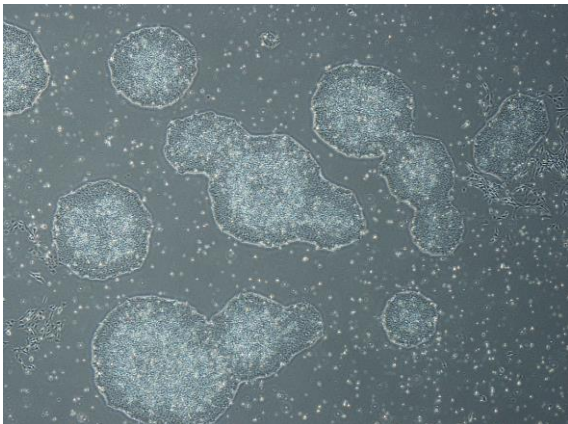
CiRA-j-1418-A: passage-3



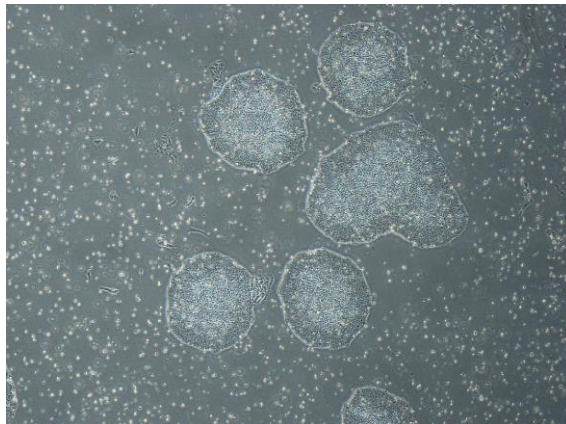
CiRA-j-1418-B: passage-3



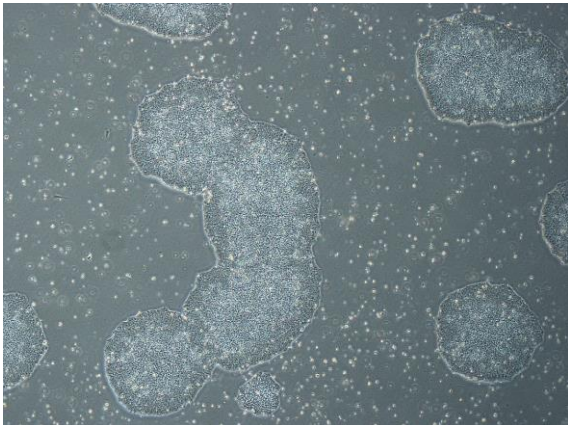
CiRA-j-1418-C: passage-3



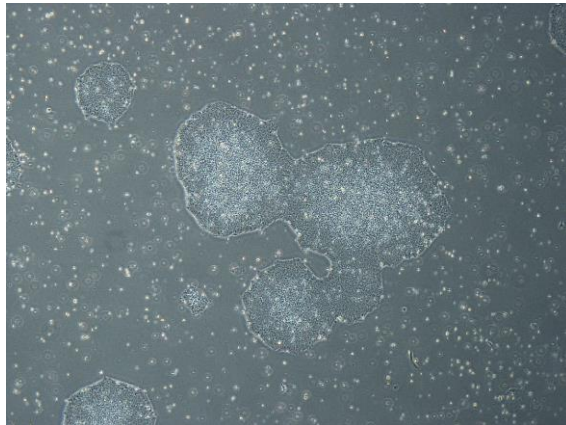
CiRA-j-1418-D: passage-3



CiRA-j-1418-E: passage-3



CiRA-j-1418-F: passage-3



( All images were captured at 4x magnification )